

Take control of your chemistry



Control multi-device jacketed reaction systems

- Unattended chemistry for improved productivity
- Automatically log your process data
- Improve safety and reduce manual errors
- Control any reactor



Download
FREE Demo
Software
www.radleys.com

Control and log

- Circulators
- Overhead Stirrers
- Temperature Sensors
- Syringe Pumps
- pH Sensors
- Peristaltic Pumps
- Balances
- Vacuum Pumps
- Gas Flow Controllers
- Stirring Hotplates
- Pressure Sensors
- Conductivity Sensors
- Gas Flow Meters

www.radleys.com





If you answer “Yes” to any of the following:

Do you want to:

- Manage multiple devices easily during complex reactions?
- Have freedom from manual recording of experimental data?
- Safely run and monitor unattended reactions 24/7?
- Reduce manual errors or inconsistencies in your chemistry?
- Safely control exotherms?



Then AVA Software is what you need to take control of your chemistry

Control multi-device reactions

- Control up to 4 reaction systems with up to 16 devices on one screen
- Create complex experiments with any number of steps in series or parallel
- Pre-program multi-step recipes, with the flexibility to make and track on-the-fly adjustments
- Interlink devices and set feedback/control loops, end-point conditions and safety limits



No more manual data logging or manual errors

- Automatically record reaction parameters and log what you do, as you do it
- Repeat experiments accurately for reproducible and consistent results
- Create reports in a few clicks or export data as a CSV file for further analysis
- Share results between users to improve research and collaboration

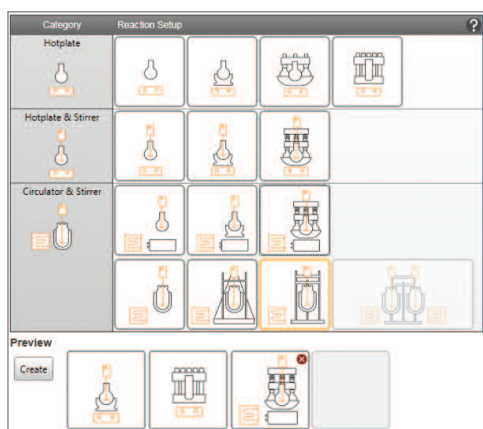
Safe unattended chemistry

- Automate cooling during exothermic events
- Link devices such as balances and pumps for controlled, unattended reagent addition
- Define safety overrides and cut-off conditions
- Configure audio and visual alarms



1. Select your Apparatus setup

- Select Apparatus background that matches your reaction setup
- Select up to four Apparatus setups
- Create new or open existing Apparatus templates



Apparatus Setups Window

Download
FREE Demo
Software
www.radleys.com

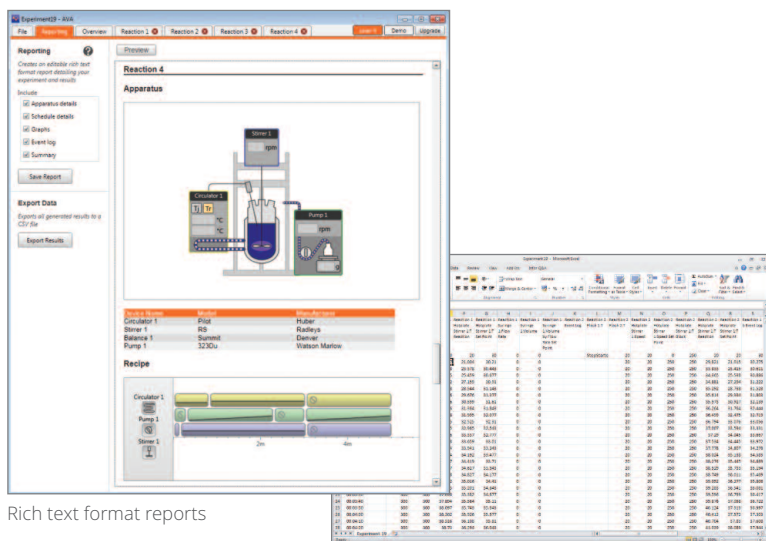
2. Add multiple devices

- Select and name devices
- Set device parameters and safety limits
- Link devices for dual control e.g. pump and balance for gravimetric additions



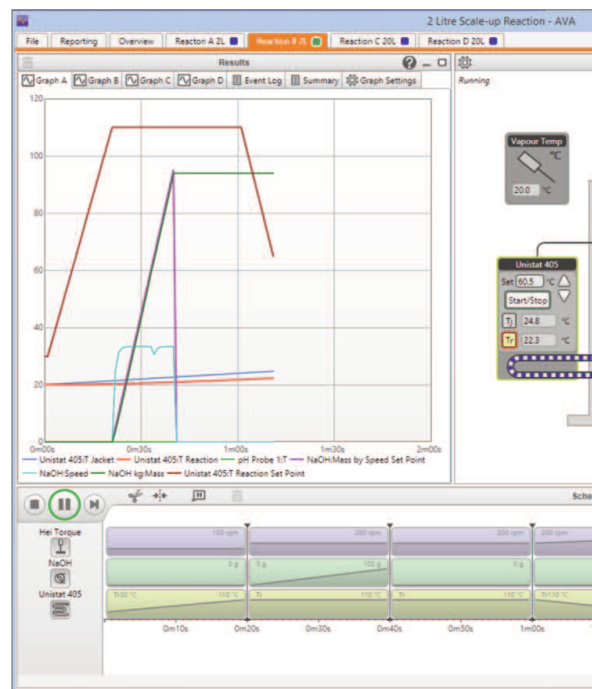
7. Create reports and share data

- Automatically log and save all data
- The report wizard creates detailed reports in rich text format (for word processing) or CSV (for spreadsheets)
- Share experiments and results with other AVA users



Rich text format reports

Export data by CSV format if preferred



6. Enhanced safety for unattended

- Set individual device warning alarms
- Set emergency safe conditions or reaction
- Create safety feedback loops e.g. control
- Set user-definable limits or parameters for

Control and log your existing synthesis equipment

Circulators, Overhead Stirrers, Temperature Sensors, Syringe Pumps, pH Sensors, Peristaltic Pumps, Balances, Vacuum Pumps, Gas Flow Controllers, Stirring Hotplates, Pressure Sensors, Conductivity Sensors and Gas Flow Meters

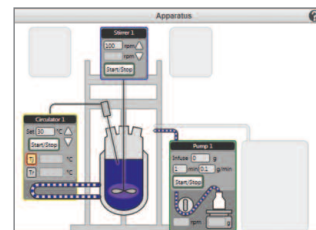


Overview

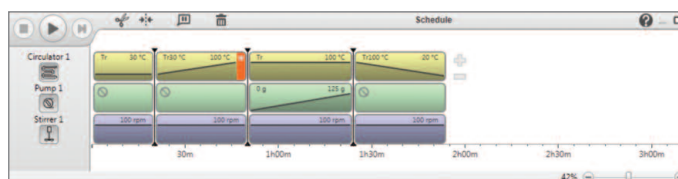
Control up to 4 different reactions in parallel

3. Select Direct or Schedule control

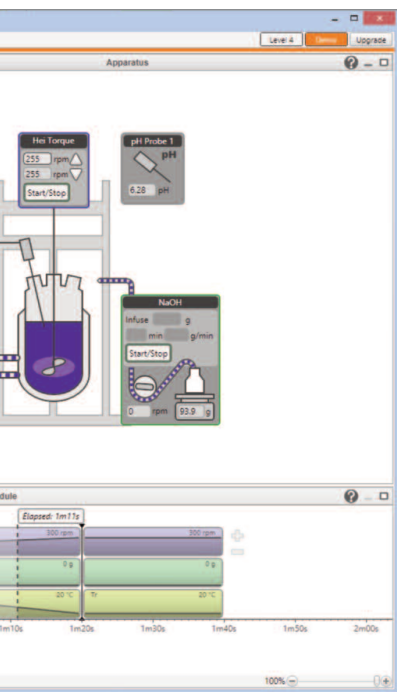
- Control devices directly via the Apparatus Window, or...
- Use the Schedule Window to create experiment profiles e.g. create ramps, plateaus and timed actions



Apparatus Window



Schedule Window



Extended operation 24/7

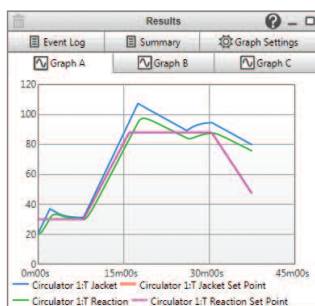
on shutdown if a sensor limit is exceeded
a pump addition by process temperature
for all devices

4. 'Track and Repeat'

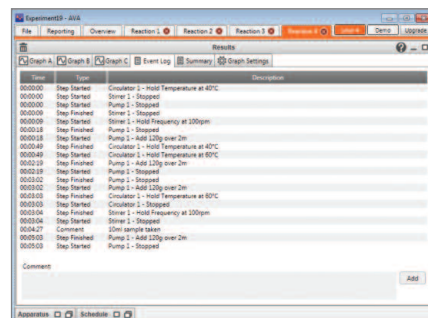
- Track what you do, as you do it and record all actions
- Repeat to refine the Schedule to optimise the experiment
- This clever feature enables automation of a manual process with ease and without any programming knowledge

5. Graph data and modify experiments on-the-fly

- View real-time graphs
- Stop, pause or skip steps and modify experiments mid-run
- Add or remove steps as the timeline progresses
- Add notes in the Event Log



Graphs allow you to select what you plot



Event Log records all actions and notes

Control equipment from a variety of manufacturers

Data Hub

Integrate devices with an RS232 serial interface

Using the Data Hub, AVA can connect to, control and log data from multiple 3rd party devices with an RS232 serial interface.

Choose from two Data Hub models:

- RR20200 - 4 Port Data Hub
4 x RS232 ports and 2 x Pt100 sensor ports
- RR20202 - 2 Port Data Hub
2 x RS232 ports and 2 x Pt100 sensor ports
- Combine up to 4 Data Hubs to increase capacity

Specifications:

- 2 or 4 x RS232 serial ports
- 2 x Pt100 temperature sensor ports, with LEMO connection
- 1 x Ethernet port



2 and 4 x RS232 port options



Power & Ethernet Connection
















2 x Pt100
Temperature Sensor Ports

4 x RS232
Serial Ports

Comprehensive Driver Library

- AVA includes a library of pre-configured driver files allowing easy integration with a wide range of 3rd party devices.
- Radleys also provide a 'New Driver Configuration Service' if required.

| | | |
|---|----------------------|---|
|  | Circulators | Haake Huber Julabo Lauda |
|  | Overhead Stirrers | Heidolph IKA Lara CLR Radleys |
|  | Temperature Sensors | Generic |
|  | Syringe Pumps | Harvard New Era WPI |
|  | pH Sensors | Knick Jenway |
|  | Peristaltic Pumps | Cole-Parmer Ismatec Heidolph Watson-Marlow |
|  | Balances | A&D Denver Mettler Ohaus Precisa Sartorius |
|  | Vacuum Pumps | Vacuubrand |
|  | Gas Flow Controllers | Bronkhorst |
|  | Stirring Hotplates | Heidolph IKA Radleys |
|  | Pressure Sensors | Omega |
|  | Conductivity Sensors | Knick |
|  | Gas Flow Meters | Bronkhorst M+W Instruments |

Download and try the AVA software for FREE
@ www.radleys.com



Learn how AVA software works

- Simulate the control of devices
- Set up apparatus and control experimental Schedules
- Share setups and Schedules with other AVA users
- Analyse results and create reports for real or simulated data
- See the full range of AVA software levels



How to order

AVA Software Kit

RR20308 AVA Level 4 Software Kit

Comprising:

- AVA Software Level 4
- Laptop Controller
- 4 Port Data Hub
- 1 Year AVA Care Support

AVA Software Only

RR20114 AVA Level 4 Software

Software includes:

- 1 Year AVA Care Support



AVA Care Support

FREE support for 1st year

- Free priority email and telephone support
- Free set-up and application support
- Free software updates during support period, keeping software current

Renew AVA Care for another year

RR20144 AVA Care Level 4 - 1 Year

AVA is available in four levels to suit your application and budget

- The different AVA levels determine the types of devices that can be controlled and logged by the software
- Visit www.radleys.com to find out more



AVA Ordering Information

Download
FREE Demo
Software
www.radleys.com

AVA Software Kit

| | |
|---------|---|
| RR20308 | AVA Level 4 Software Kit - includes: Laptop Controller 4 Port Data Hub 1 Year AVA Care |
|---------|---|

AVA Software Only

| | |
|---------|--|
| RR20114 | AVA Level 4 Software + 1 Year AVA Care |
|---------|--|

AVA Care Support

| | |
|---------|---------------------------|
| RR20144 | AVA Care Level 4 - 1 Year |
|---------|---------------------------|

New Driver Device Integration

| | |
|---------|------------------------------|
| RR20217 | Driver Configuration Service |
|---------|------------------------------|

Controller

| | |
|---------|-------------------|
| RR20250 | Laptop Controller |
|---------|-------------------|

Data Hub and Accessories

| | |
|---------|--|
| RR20200 | 4 Port Data Hub |
| RR20202 | 2 Port Data Hub |
| RR20454 | Ethernet Switch (enables the use of 4 x Data Hubs, providing up to 16 x RS232 ports) |

Peripheral Devices

Circulators

We offer a full range of circulators, hoses, oils, cables and accessories for all types of heating/cooling applications. For advice on selecting the system or accessory you need please contact our sales office.

Overhead Stirrers - with RS232 serial interface

| | |
|---------------|--|
| 501-61020-00 | Hei-TORQUE Precision 100 - (RS232 & USB) |
| 501-62020-00 | Hei-TORQUE Precision 200 - (RS232 & USB) |
| 501-64020-00 | Hei-TORQUE Precision 400 - (RS232 & USB) |
| 14-007-040-72 | RS232 Interface Cable - 9 pin to 9 pin |

Syringe Pump Additions Module

| | |
|----------|---|
| RR20504 | Syringe Pump Additions Module - which includes: |
| RR20418 | Single Syringe Pump to 60 ml |
| RR20420 | Control Cable, Single Syringe Pump to PC, 2 m |
| RR20407 | Marprene Tubing 1.6 mm Bore 1.6 mm Wall, 5 m |
| RR139111 | Screw Cap with Aperture GL14 |
| RR139113 | Silicone Seal with PTFE Washer GL14, 6 mm |
| RR139091 | Adapter Rodaviss, B24 to GL14 |
| RR139095 | Adapter Rodaviss, B24 to 2 x GL14 |

pH Module

| | |
|----------|---|
| RR20502 | pH Module - which includes: |
| RR20424 | pH/mV/Temp Meter Portable + Control Cable (probe not included). Battery operated. |
| RR20438 | Cable, pH Meter to Combination VP Probe, 3 m |
| RR139087 | Adapter Rodaviss B34 to GL25 |
| RR139125 | Swivel 12 mm pH Probe Adapter GL25 |
| RR20440 | Buffer Solution Certified pH 4.01 +/-0.02 - 500 ml |
| RR20442 | Buffer Solution Certified pH 7.00 +/-0.02 - 500 ml |
| RR20444 | Buffer Solution Certified pH 9.21 +/-0.02 - 500 ml |

pH Probes

| | |
|---------|--|
| RR20432 | Combination VP pH Probe 325 mm x 12 mm (100, 250, 500 ml vessels) |
| RR20434 | Combination VP pH Probe 360 mm x 12 mm (1000 ml vessels) |
| RR20436 | Combination VP pH Probe 425 mm x 12 mm (2000, 3000, 5000 ml vessels) |

Gravimetric Additions Module

| | |
|----------|--|
| RR20500 | Gravimetric Additions Module - which includes: |
| RR20446 | Toploading Balance 0.01 g x 4,200 g |
| RR20450 | Control Cable, Balance to PC, 3 m |
| RR20400 | Peristaltic Pump 400 rpm 2000 ml/min |
| RR20404 | Control Cable, Peristaltic Pump to PC, 3 m |
| RR20407 | Marprene Tubing 1.6 mm Bore 1.6 mm Wall, 5 m |
| RR139091 | Adapter Rodaviss, B24 to GL14 |
| RR139095 | Adapter Rodaviss, B24 to 2 x GL14 |
| RR139101 | 1000 ml Lab Bottle GL45 |
| RR139109 | Distribution Cap GL45 with 2 x GL14 |
| RR139111 | Screw Cap with Aperture GL14, pack 10 |
| RR139113 | Silicone Seal with PTFE Washer GL14, 6 mm, pack 10 |
| RR20452 | Labjack 200 x 230 mm |

Vacuum Pump Module

| | |
|----------|---|
| RR20506 | Vacuum Pump Module - which includes: |
| VB696702 | PC3001 Vario Chemistry Diaphragm Pump - UK Plug |
| RR20216 | Null Modem Serial Cable, 2 m |
| RR20456 | NW 8 Rubber Vacuum Hose, 3 m |
| RR139025 | Gas Purge Adapter B24 + GL14 + Fittings |

Stirring Hotplates - with RS232 serial interface

| | |
|---------|---|
| RR91207 | Carousel Connect Stirring Hotplate |
| RR91208 | Carousel Connect Stirring Hotplate + Pt1000 |
| RR91237 | Carousel Connect RS232 Interface Cable - 9 Pin to 9 Pin |
| RR91226 | Pt1000 S/S Temperature Sensor |
| RR91228 | Temperature Sensor Holder |
| RR91229 | Support Rod (13 mm x 425 mm) |
| RR91235 | Pt1000 Clamping System + Support Rod and Cable Guide |

Voltage and Plug Options

For your preferred voltage please add suffix /UK, /EURO, /JAP, /SWISS or /USA to the end of the catalogue number.